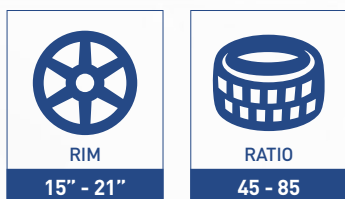


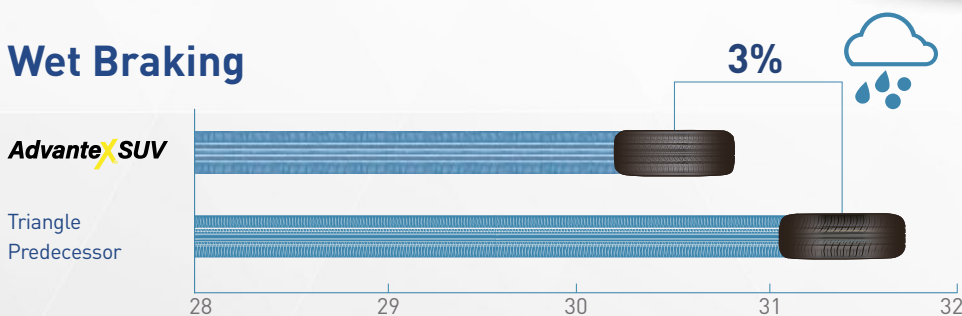
AdvanteX SUV TR259

- Excellent all-round performer designed for modern SUV's
- The mix of new tread pattern and compound technology applied to the fast-growing segment of SUV has brought to comfort, fuel efficiency and braking performance in all road conditions

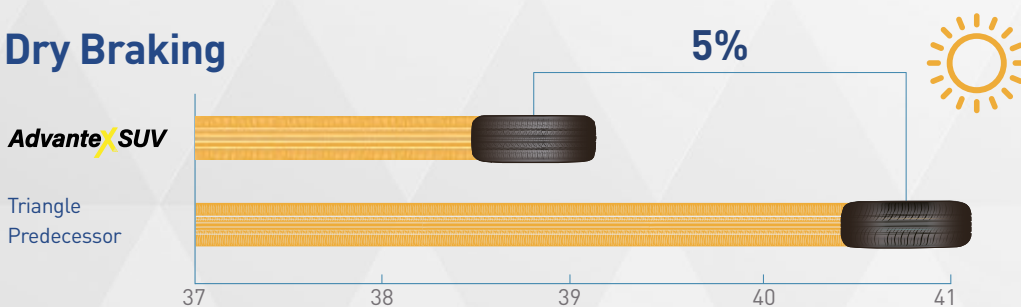


Performance

Wet Braking



Dry Braking



Features and Benefits



Five rib tread design

For maximum surface contact and even bear loading, resulting in balanced wet and dry handling performance.



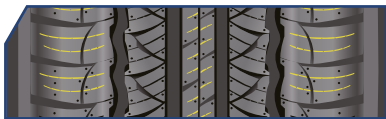
Additional shoulder and intermediate rib slot

For improved shoulder stability and better water drainage efficiency, resulting in confident wet/dry and light snow handling performance.



Closed and supported shoulder slots

For a balanced wet/dry noise performance and handling, resulting in a quieter and more comfortable ride.



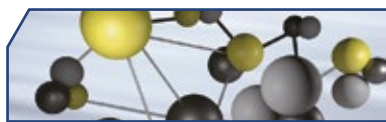
Strategically placed sipe/blade density

For increased biting edges and water dispersion, resulting in improved wear performance with comfort and good wet/light snow performance.



Reinforced high reversed carcass structure

For a reduction in carcass deformation and enhanced sidewall strength, resulting in improved durability and driving stability.








Optimized silica tread formula compound

For lower rolling resistance, reduced irregular wear and shorter braking distance, resulting in improved fuel efficiency, quiet and comfortable driving.

Product Specifications



Segment	Width	Ratio	Rim	LI	SI	XL				Noise
SUV	275	45	21	110	Y	XL	C	C	B	73
SUV	255	45	21	102	W	XL	C	C	B	72
SUV	285	50	20	116	W	XL	C	C	A	72
SUV	275	50	20	113	W	XL	C	C	B	73
SUV	265	50	20	111	Y	-	B	C	B	73
SUV	255	50	19	107	V	XL	D	C	A	70
SUV	235	50	18	97	V	-	D	C	B	71
SUV	225	50	18	99	W	XL	C	C	B	72
SUV	215	50	18	92	W	-	D	C	B	71
SUV	275	55	20	117	W	XL	C	C	B	73
SUV	255	55	19	111	W	XL	C	C	B	73
SUV	235	55	19	105	W	XL	C	C	B	72
SUV	225	55	19	99	V	-	D	C	B	71
SUV	255	55	18	109	W	XL	C	C	B	73
SUV	235	55	18	104	V	XL	D	C	B	72
SUV	225	55	18	102	W	XL	C	C	B	72
SUV	215	55	18	95	V	-	D	C	B	71
SUV	275	55	17	109	V	-	C	C	B	70
SUV	235	55	17	103	V	-	D	C	B	72
SUV	275	60	20	115	H	-	C	C	B	72
SUV	255	60	19	109	V	-	C	C	B	72
SUV	265	60	18	114	V	XL	C	C	B	73
SUV	255	60	18	112	H	XL	C	C	B	73
SUV	245	60	18	105	H	-	C	C	B	71
SUV	235	60	18	107	W	XL	C	C	B	72
SUV	225	60	18	104	W	XL	C	C	B	72
SUV	275	60	17	110	H	-	C	C	B	72
SUV	235	60	17	102	V	-	D	C	B	71

Segment	Width	Ratio	Rim	LI	SI	XL				Noise
SUV	225	60	17	99	V	-	D	C	B	71
SUV	215	60	17	96	H	-	D	C	B	71
SUV	235	60	16	100	H	-	D	C	B	71
SUV	275	65	18	116	H	-	C	C	B	72
SUV	265	65	18	114	H	-	C	C	B	72
SUV	255	65	18	111	H	-	C	C	B	72
SUV	235	65	18	106	H	-	D	C	B	71
SUV	245	65	17	111	H	XL	C	C	B	72
SUV	235	65	17	108	V	XL	C	C	B	72
SUV	225	65	17	106	V	XL	C	C	B	72
SUV	215	65	17	99	V	-	D	C	B	71
SUV	215	65	16	102	V	XL	D	C	B	72
SUV	255	70	18	116	H	XL	C	C	B	73
SUV	265	70	17	115	H	-	C	C	B	72
SUV	245	70	17	114	H	XL	C	C	B	72
SUV	265	70	16	112	H	-	D	C	B	72
SUV	245	70	16	111	H	XL	C	C	B	72
SUV	235	70	16	106	H	-	D	C	B	71
SUV	225	70	16	103	H	-	D	C	B	71
SUV	215	70	16	100	H	-	D	C	B	71
SUV	255	70	15	108	H	-	C	C	B	72
SUV	235	70	15	107	H	XL	D	C	B	72
SUV	225	70	15	100	H	-	D	C	B	71
SUV	265	75	16	116	S	-	C	C	B	72
SUV	245	75	16	114/111	S	-	D	C	B	72
SUV	225	75	15	106	H	XL	D	C	B	72
SUV	215	75	15	100	H	-	D	C	B	71
SUV	205	75	15	102	H	XL	D	C	B	72
SUV	235	85	16	120/116	S	-	D	C	B	72
SUV	215	85	16	115/112	S	-	D	C	B	72